

VERY individual dwelling must be, to a certain extent, a product of circumstances, for the reason that it must conform to the life of the family who are to inhabit it.

The plans must be arranged for the needs of the family, and the extra design must be influenced by the environments surrounding the site upon which the house is to be built. Having settled these two points, the restrictions lie only in the materials which are to be selected for its construction, and the amount of money to be spent in its erection. There is also another feature which is important, and that is, the treatment of the interior decorations in harmony with the furnishings which the various rooms are to contain.

The summer house at East Hampton, Long Island, which is illustrated in these pages, was built for Thomas Nash, Esq., of New York, who was also its architect.

The site is a corner one, and the house stands with its end facing the main thoroughfare, from which a driveway extends in and around a circle placed in front of the entrance at the side of the house. A terrace with a floor paved with brick and reached by stone steps extends across the entrance, connecting with the covered piazza on the side. Bay trees and hydrangeas lend a tone of color to the approach. A platform, covered



A Fine Doorway Gives a Distinct Character to the House

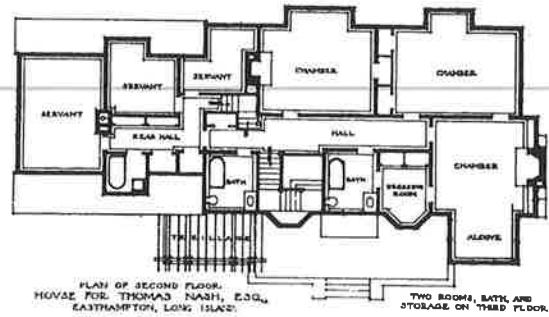
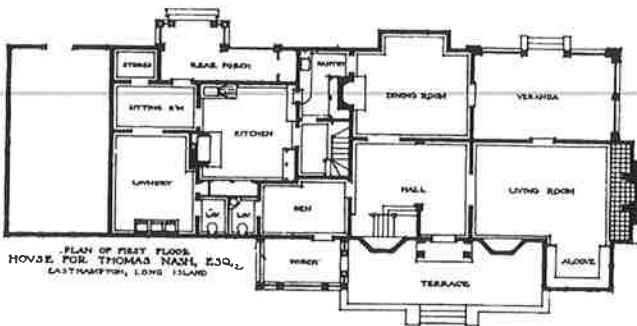
with a hood supported on Ionic columns, leads to the doorway. The exterior of the house is covered with shingles, which are left in their natural state, weathering to a silver gray color, and harmonizing with the ivory-white painted trim. The doorway opens into a square hall, whose walls are paneled with cypress from the floor to the ceiling and stained a soft brown. There is a good deal of quaint antique furniture placed along the walls. The joists of the ceiling are exposed to view and are stained. An unobtrusive staircase rises at the side of the entrance.

To the right of the hall is the living-room, which is treated in a similar manner with paneled walls and exposed ceiling timbers, all stained and finished in a soft brown tone. The color scheme of the room is good and harmonizes well with its furnishings. There is a large open fireplace built of red brick, with facings and hearth of the same; a carved mantel shelf, supported on carved brackets, completes the chimney fixtures. An alcove, raised two steps from the main floor, completely inclosed with glass windows and surrounded with paneled seats, is an attractive feature of this room. French windows open onto the piazza, which is inclosed with glass and finished as an outdoor living-room. The den is fitted up in an attractive manner.

The dining-room has paneled walls similar to those of the hall, which are stained in a reddish-brown color to har-



The Principle Living-rooms Have a Southern Exposure



The House Grounds Are Agreeably Planted with Shrubs and Flowers



A Brick Fireplace with Partially Paneled Walls Are the Features of the Dining-room



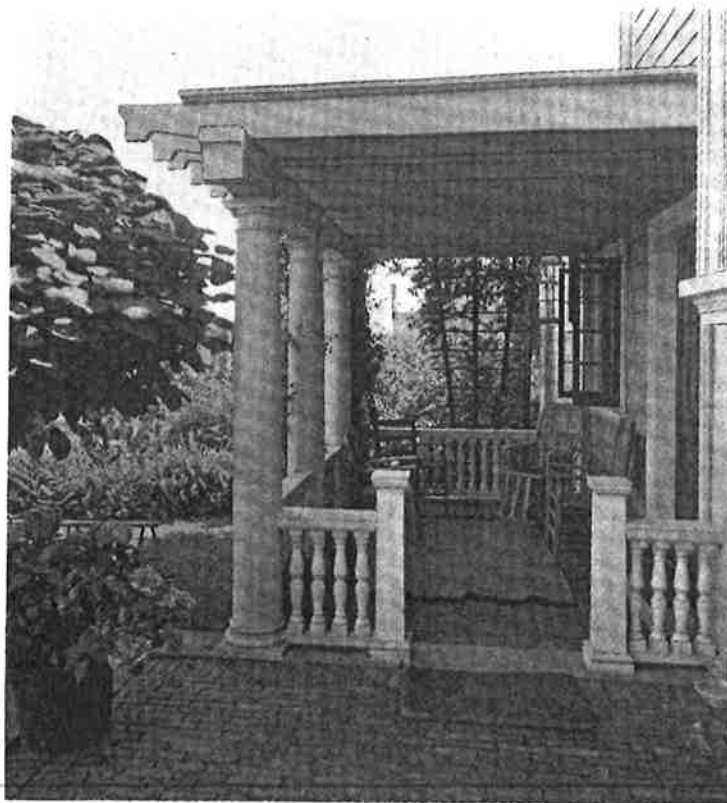
The Walls of the Living-room Are Paneled with Cypress, Stained a Soft Brown



monize with the mahogany furniture with which the room is furnished. An open fireplace with Welsh tile hearth and facings and an attractive mantel, and the bay window, with casement frames, are the features of the dining-room.

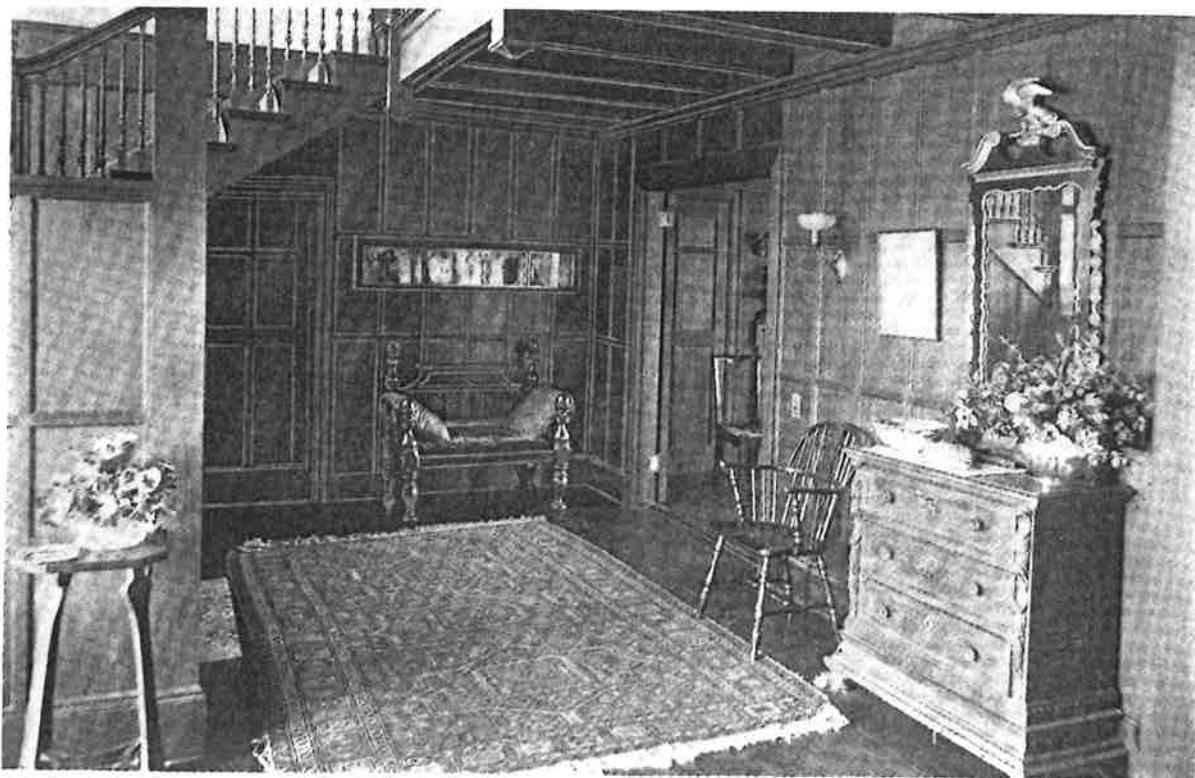
The butler's pantry is fitted up with sink and dresser, and by communicating with the kitchen through a servants' hall and staircase forms a double isolation of the kitchen and its dependencies, and prevents any possibility of the kitchen odors penetrating the remainder of the house.

The kitchen and laundry are well fitted with all the best modern conveniences, and the servants' hall is also

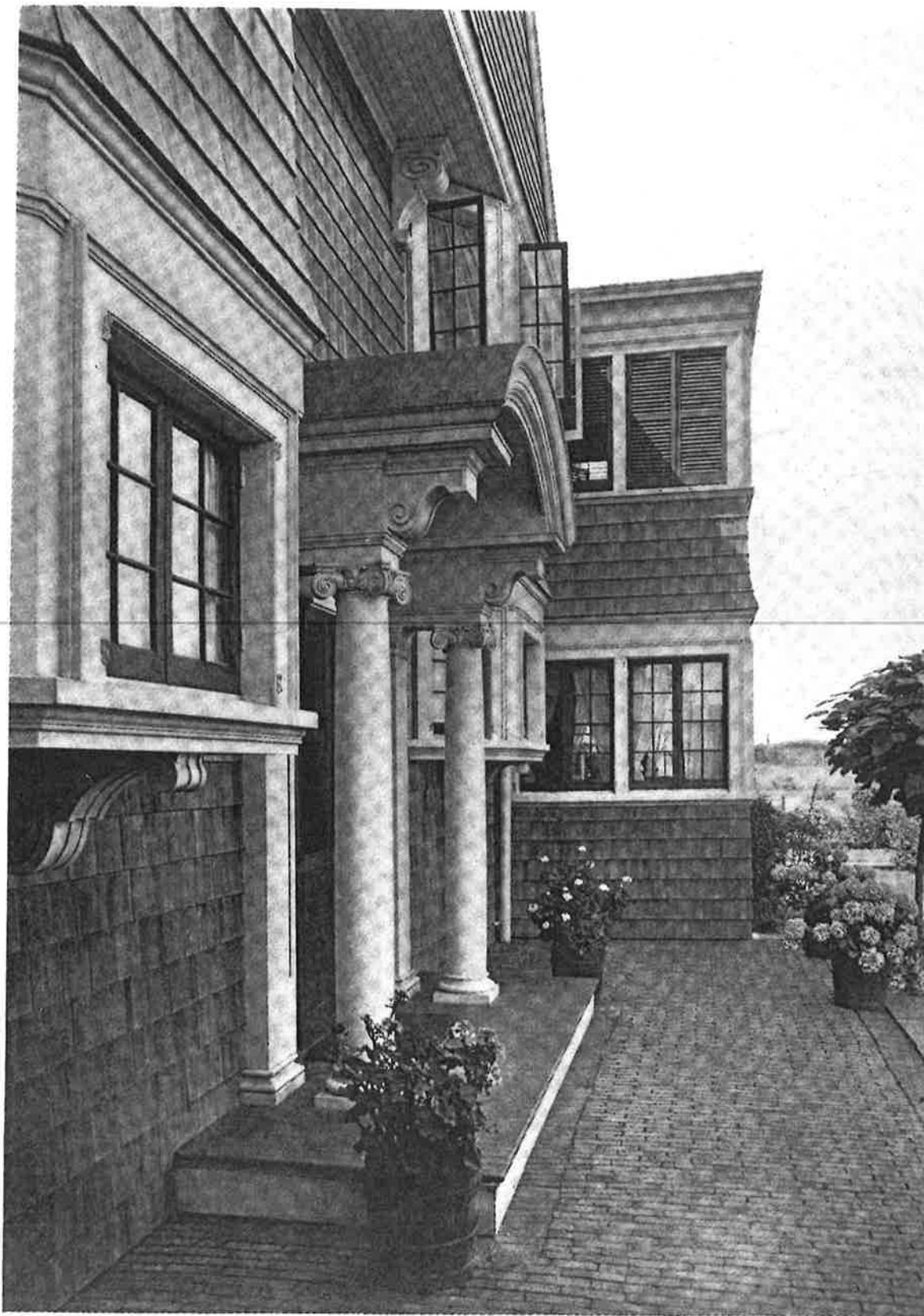


A Side Porch Leading from the Terrace

a good feature and a necessary one for a well equipped house. These apartments are trimmed with yellow pine treated with a hard oil paint. An inclosed clothes yard at the rear of the house is an important annex to the country house. The second floor is trimmed with white wood and painted ivory white; it contains the owner's suite, consisting of a large bedroom, dressing-room and bathroom, and two guest rooms and bathrooms. The bedrooms have ample closets, and two of them have open fireplaces with tiled facings. The extension over the kitchen contains three servants' bedrooms and a bathroom. The furnace is in the cellar.



Dignity Is Maintained in the Hall with Its Paneled Walls and Antique Furnishings



The Terrace Before the Entrance Front of the House of Thomas Nash, Esq.