

670 MONTAUK HWY U. 1C, WATER MILL

Prime Retail Opportunity

Highway Exposure & Extensive Windows



COMPASS
COMMERCIAL



Key Details

Corner storefront with highway exposure, extensive windows, and a patio in Water Mill Square.

670 Montauk Hwy Unit 1C is nestled in Watermill Square with a stunning mix of highway exposure, a lighted patio, & windowed walls to bring your store attention. The complex has extensive parking to accommodate its mix of luxury & utility tenants; drawing year-round & all day interest. This site also benefits from the nearby Watermill Crossing; a 38 luxury townhome complex just built / sold out.

The **1,650sf space** is comprised of an open retail room with window walls, a view of Corwith Park, an office, extensive storage, and a powder room.

Surrounding Neighbors:

Kissaki Sushi, USPS Water Mill, East End Blueprint, Serenity Nails, Little Barn Dance & Musical Theatre, Pilates Social Hamptons, The Water Mill Museum, Blackhawk Electric

Price Upon Request

Contact the Hamptons Commercial RE Team for additional information.

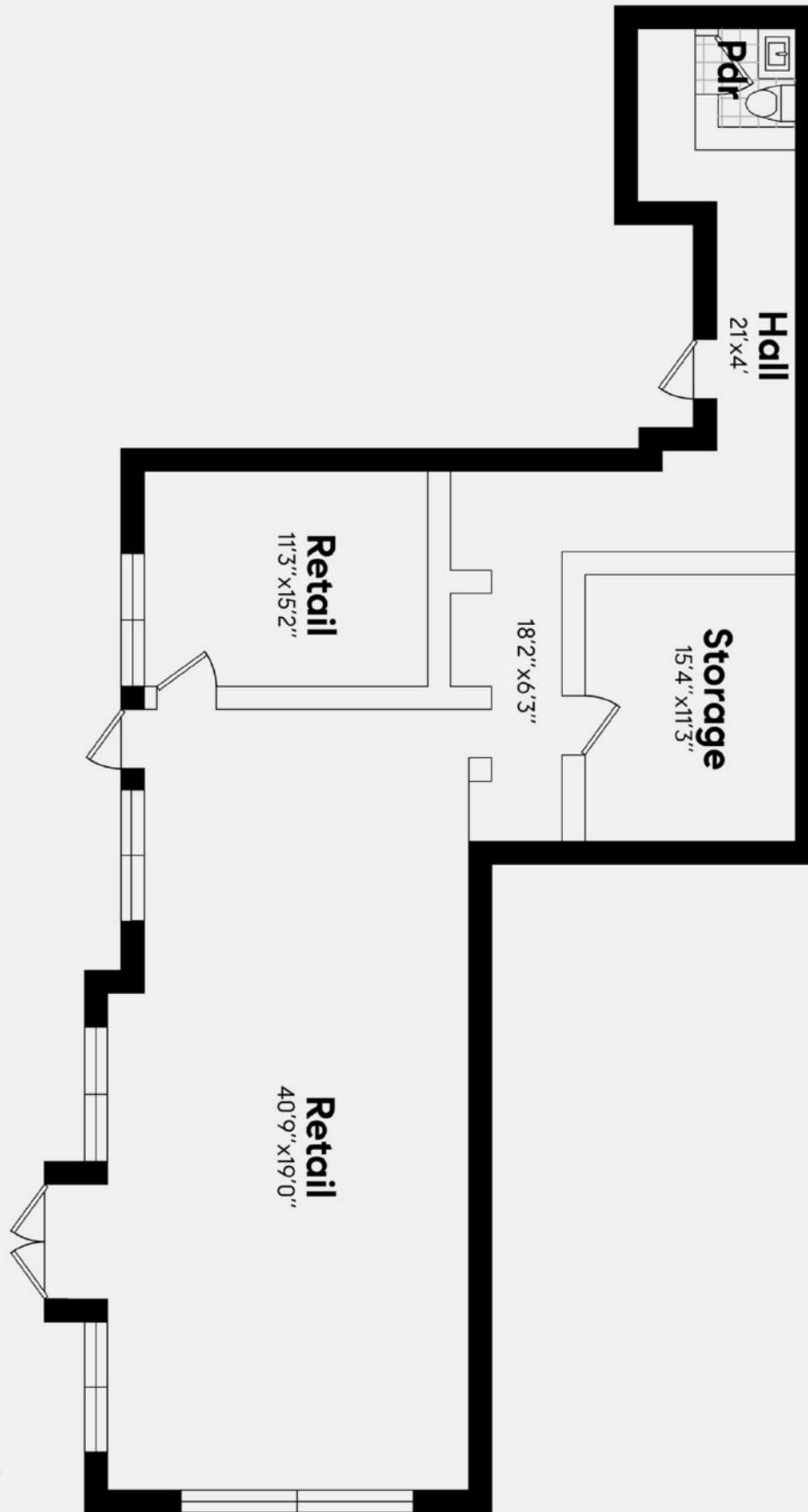












Floor plan, furniture, and fixture measurements and dimensions are approximate and are for illustrative purposes only. The representative gives no guarantee, warranty or representation as to the accuracy and completeness of the floor plan.



**HAMPTONS COMMERCIAL
REAL ESTATE TEAM**

**Apprx SqFt:
1,650**



Hal Zwick

Lic. R.E. Salesperson
631.678.2460
hal.zwick@compass.com



Jeffrey Sztorc

Lic. R.E. Salesperson
631.903.5022
jeffrey.sztorc@compass.com