

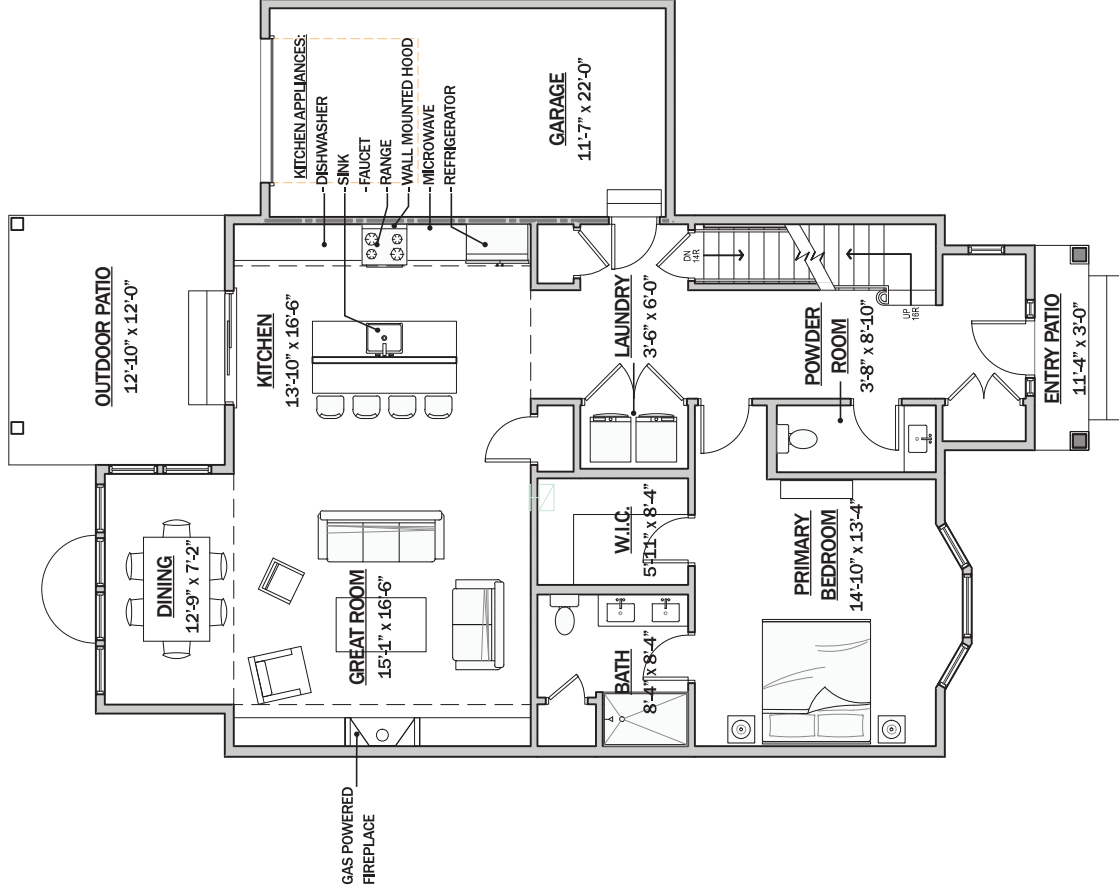
TOTAL:	3,357 SF
BASEMENT:	1,244 SF
CEILING HEIGHT:	10'-0"

INLET: UNIT A.4- BASEMENT FLOOR PLAN

DISCLAIMER: ALL DIMENSIONS ARE APPROXIMATE AND SUBJECT TO NORMAL CONSTRUCTION VARIANCES AND TOLERANCES. DIMENSIONS ARE MAXIMUM OVERALL, SUBTRACT CUTOUTS. WE RESERVE THE RIGHT TO MAKE CHANGES DUE TO UNFORSEEN CONDITIONS IN ACCORDANCE WITH THE OFFERING PLAN. UNIT DIMENSIONS ARE MEASURED HORIZONTALLY FROM THE EXTERIOR FACE OF THE EXTERIOR WALLS OR WINDOWS TO THE MID-POINT OF THE DEMISING PARTITIONS OF THE UNIT.

SCALE: 3/32"=1'-0"

November 26, 2024



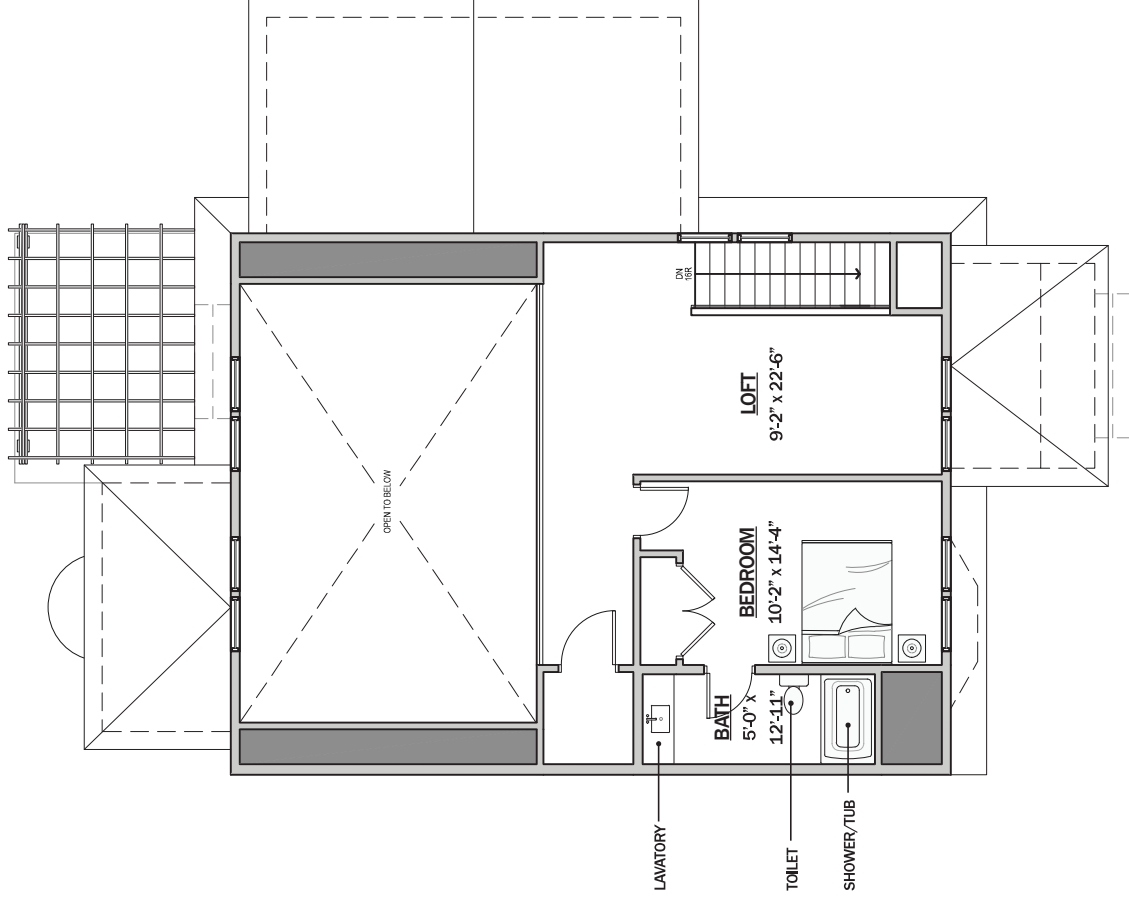
NOTE:

ACCESSORY USE ONLY, CAN'T BE USED FOR LIVING, SLEEPING OR COOKING PURPOSES.

TOTAL:	3,357 SF
FIRST FLOOR:	1,284 SF
CEILING HEIGHT:	9'-0" & 19'-10"

INLET: UNIT A.4- FIRST FLOOR PLAN

DISCLAIMER: ALL DIMENSIONS ARE APPROXIMATE AND SUBJECT TO NORMAL CONSTRUCTION VARIANCES AND TOLERANCES. DIMENSIONS ARE MAXIMUM OVERALL. SUBTRACT CUTOUTS. WE RESERVE THE RIGHT TO MAKE CHANGES DUE TO UNFORSEEN CONDITIONS IN ACCORDANCE WITH THE OFFERING PLAN. UNIT DIMENSIONS ARE MEASURED HORIZONTALLY FROM THE EXTERIOR FACE OF THE EXTERIOR WALLS OR WINDOWS TO THE MID-POINT OF THE DEMISING PARTITIONS OF THE UNIT.



NOTE:
ACCESSORY USE ONLY, CAN'T BE USED FOR
LIVING, SLEEPING OR COOKING PURPOSES.

TOTAL:	3,357 SF
SECOND FLOOR:	565 SF
CEILING HEIGHT:	9'-0"

INLET: UNIT A.4- SECOND FLOOR PLAN

DISCLAIMER: ALL DIMENSIONS ARE APPROXIMATE AND SUBJECT TO NORMAL CONSTRUCTION VARIANCES AND TOLERANCES. DIMENSIONS ARE MAXIMUM OVERALL. SUBTRACT CUTOUTS. WE RESERVE THE RIGHT TO MAKE CHANGES DUE TO UNFORSEEN CONDITIONS IN ACCORDANCE WITH THE OFFERING PLAN. UNIT DIMENSIONS ARE MEASURED HORIZONTALLY FROM THE EXTERIOR FACE OF THE EXTERIOR WALLS OR WINDOWS TO THE MID-POINT OF THE DEMISING PARTITIONS OF THE UNIT.

SCALE: 3/32"=1'-0"

November 26, 2024