

First Floor

# COMPASS

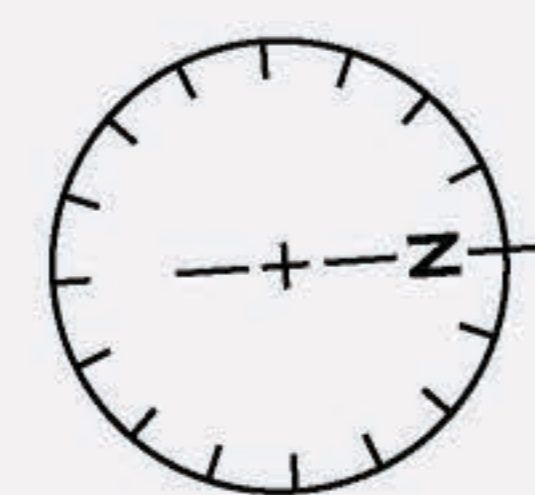
## 26 Mashomuck Drive, Sag Harbor

First Floor: 5794 Sq Ft

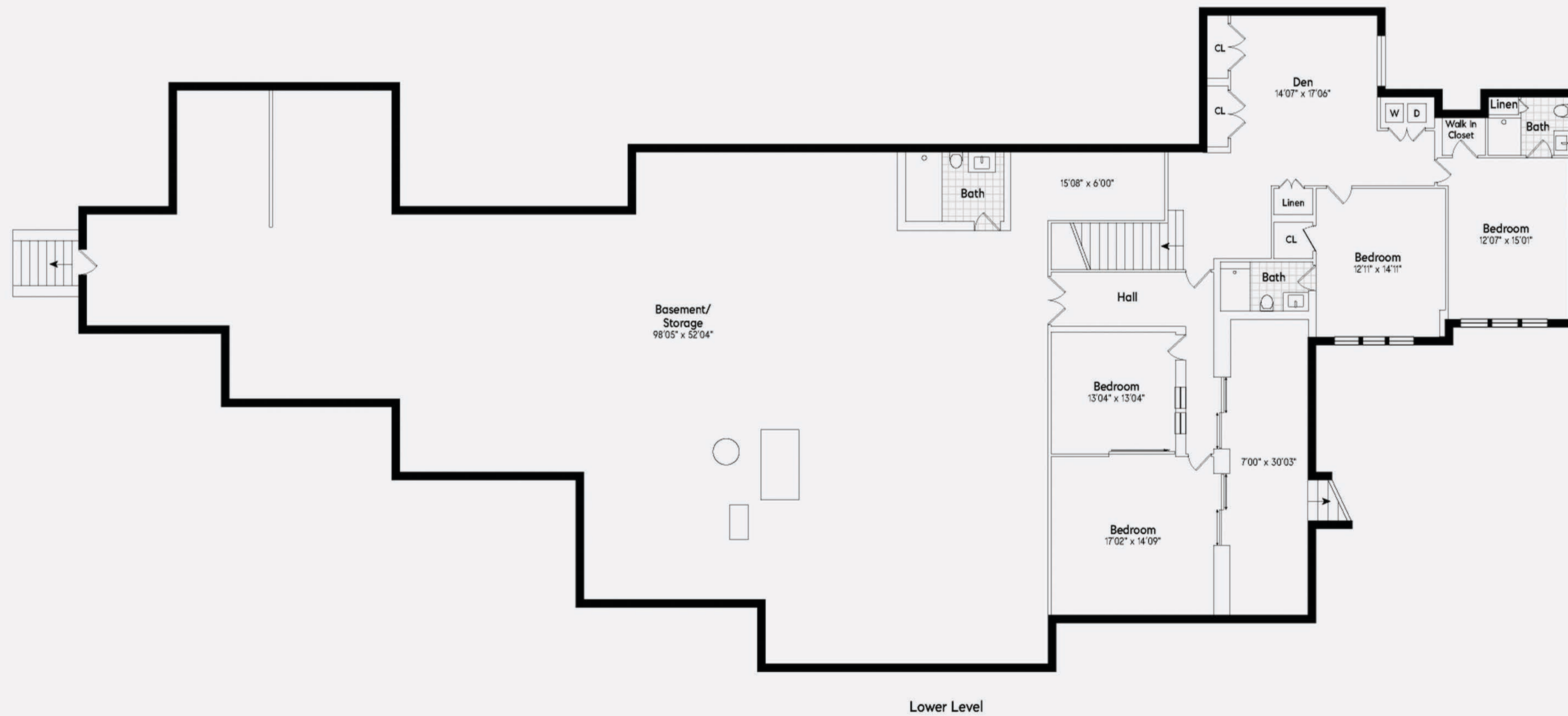
Garage: 835 Sq Ft

Finished Lower Level: 1800 Sq Ft

Basement/ Storage: 4110 Sq Ft



Floor plan, furniture, and fixture measurements and dimension are approximate and are illustrative purposes only. The representative no guarantee, warranty or representation as to the accuracy and completeness of the floor plan



# COMPASS

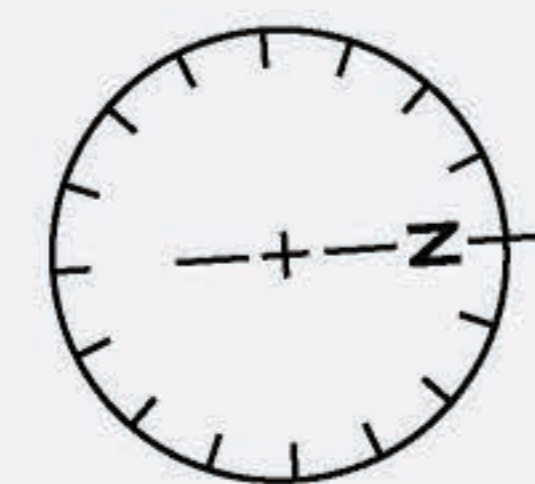
## 26 Mashomuck Drive, Sag Harbor

First Floor: 5794 Sq Ft

Garage: 835 Sq Ft

Finished Lower Level: 1800 Sq Ft

Basement/ Storage: 4110 Sq Ft



Floor plan, furniture, and fixture measurements and dimension are approximate and are illustrative purposes only. The representative no guarantee, warranty or representation as to the accuracy and completeness of the floor plan